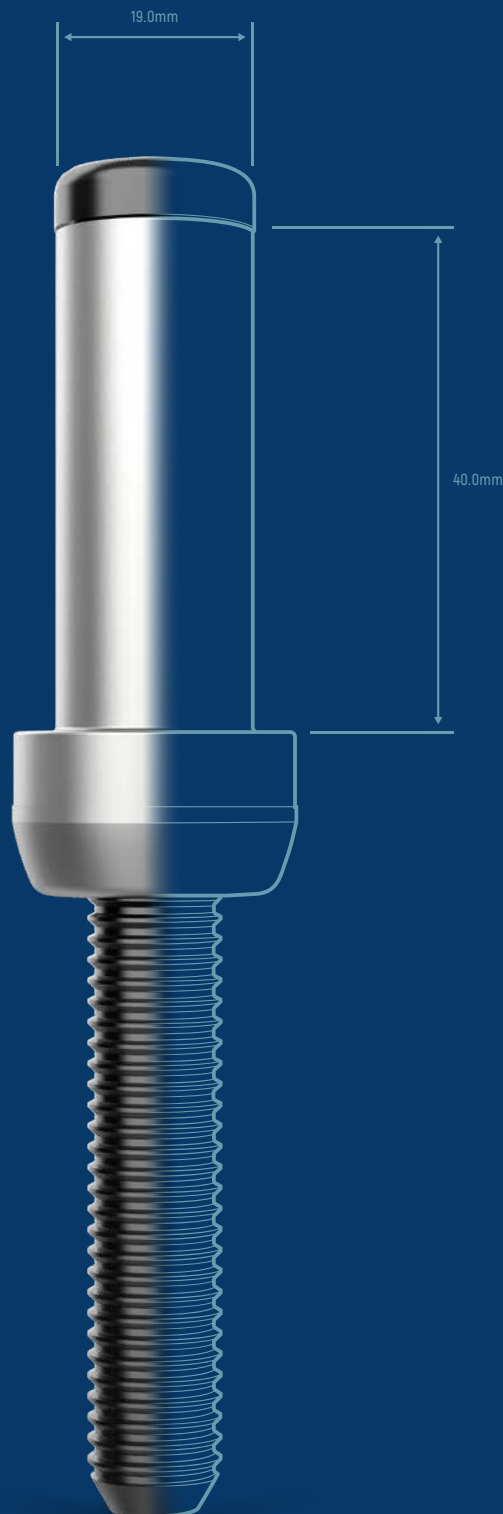


PATTA[®]

PADOM

Super High Strength
Blind Fastener



PATTA International

Our Components, Your Key

Taiwan
Vietnam
China



Since our first blind rivet in 1982 and later self-drilling screws, PATTA has continually advanced technology and product quality, investing heavily in development to grow into a diversified manufacturer.

We focus on R&D while ensuring high standards and consistent processes,
always listening to partners' needs worldwide.

PATTA is qualified with TS 16949, ISO 9001, and ISO 14001.

Today, PATTA is a global brand, providing trusted fasteners
and hardware solutions with advanced service and technology.

Persistence & Consistency

PATTA provides one-stop services from design to logistics, building long-term trust in the hardware industry.

We remain committed to **High Standard Quality, Seamless Services, Fast-moving Supply & Logistics**





PATTA INTERNATIONAL LIMITED
40th
ANNIVERSARY
1982-2025

120

Countries

6

Plants

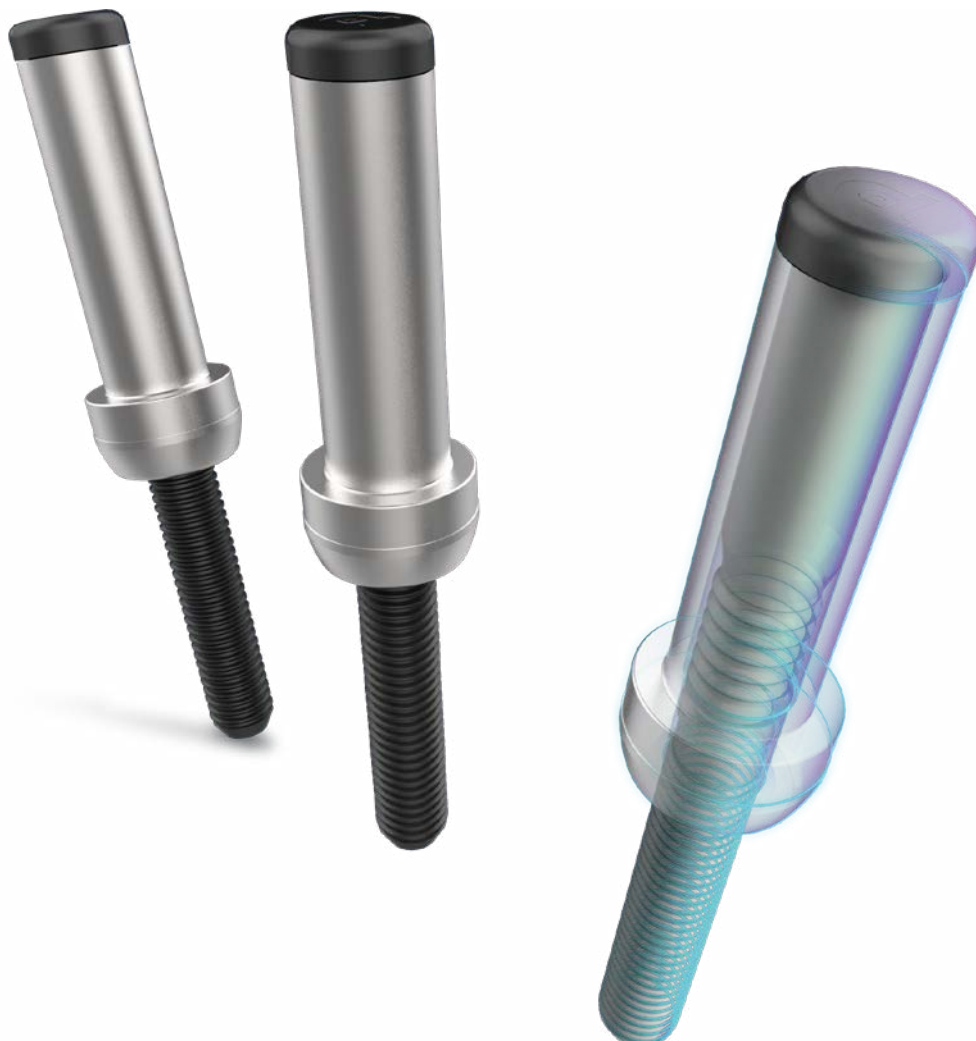
600

Employees



Index

Introduction	05
Applications	08
Ordering Information	10
Technical Specifications	11
Installation Tooling	13



PADOM

Super High Strength Blind Fasteners

Vibration and tamper resistant in any environment.
Highest shear and tensile strength in the world.

PADOM is a one-piece super high strength blind rivet that can be applied across a wide variety of heavy duty, structural applications. It can be installed within seconds and requires no special training. Installation for standard bolts and fasteners take about five to ten times longer. Furthermore, there is absolutely no need for periodic re-tightening.

PADOM fastening system is tough enough for military vehicles and equipment, auto suspensions, amusement park rides, rail car assembly, and shaft steel storage and retrieval racks. Even the most demanding high-tensile application is no match for the strength of the PADOM fastening system.



PADOM Fastening System

PADOM's unique mechanical lock guarantees not only sufficient tensile and shear strength, but is also highly resistant to tamper and vibration, which prevents the loosening of stems and prolongs the lifetime of your construction.

Its high clamp and joint tightness surpasses the work of multiple conventional fasteners, which proves it to be cost efficient.

Altogether PADOM is the best choice for fastening in screening plants and jaw crushers for mining, parabolic troughs and torque tube assembly in solar panels, chaser bins and tractor chassis for agricultural uses, and so many more industries.

Benefits

Extends Structure Life
Prevents Loosening of Joints
Saves Costs and Time

Applicable Industries

Renewable Energy
Agriculture
Mining
Construction
Commercial Transport
Military Vehicles

Body

Low Carbon Steel

Zinc Plated Finish

Mandrel

Medium Carbon Steel

Black Antirust Oil Finish



Installation Time

01sec



Shear Strength

45100lbs

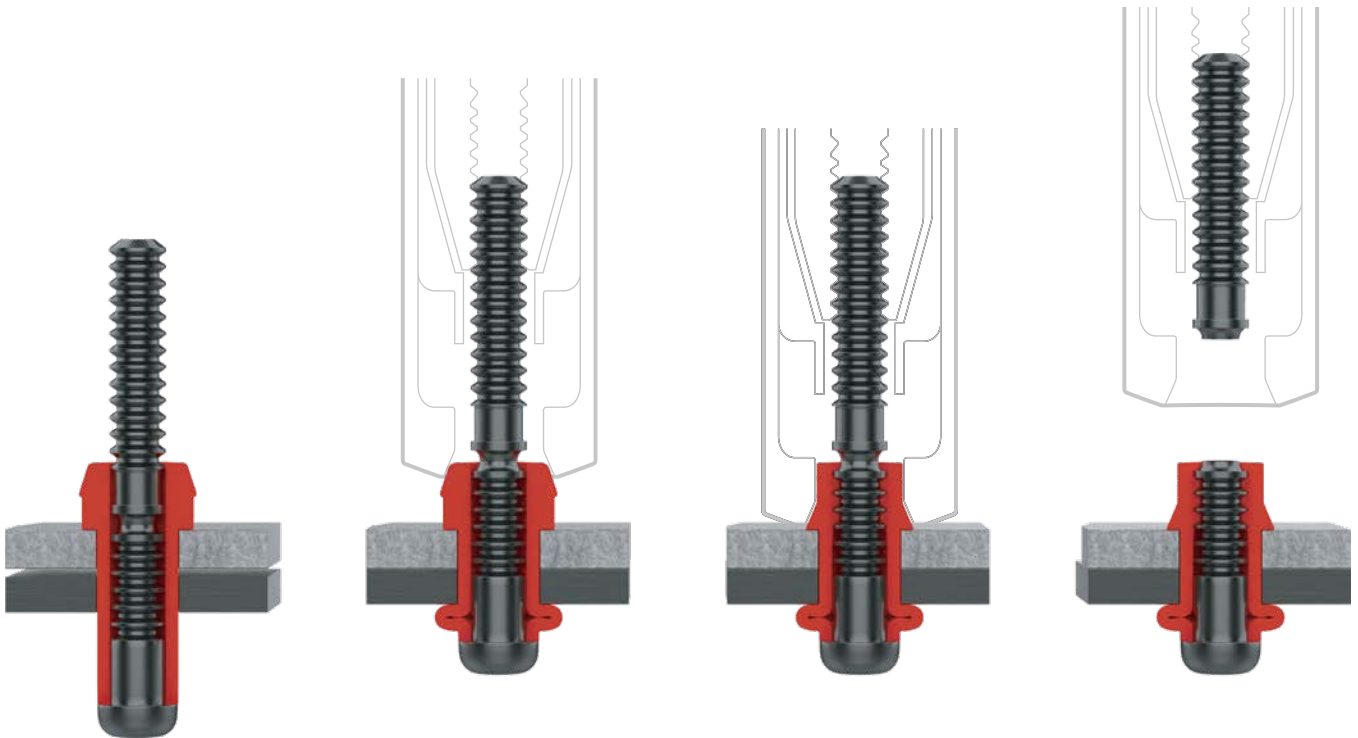


Tensile Strength

29100lbs

PADOM Installation

Installing PADOM fasteners is easy, you can learn the installation procedure in just 1 second, eliminating the need to hire certified welders or specially trained employees. In other words, the correct installation doesn't depend on operator skill and installations are more accurate than other fasteners. When you start using PADOM fasteners, saving you more money in the long run.



1. Insert the fastener into the hole and slip the installation tool over the pintail.

2. Press the trigger to initiate pulling action, until the maximum allowable bulb is formed on the backside.

3. Continued pulling on the pintail draws the workpieces together and moves down the length of the collar, securely locking the collar to the pin.

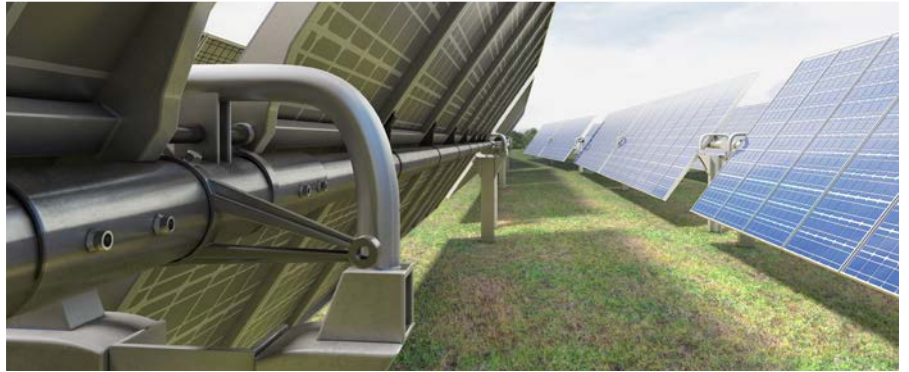
4. The tool ejects the fastener and releases the puller to complete the sequence.

Setting Grip

The collar is locked to the pin through the forming process, creating a high vibration-resistant connection and the highest strength of any blind fastener.



PADOM Application



Applications

- Agriculture Machinery
- Cellular Network Towers
- Electric Vehicles
- Renewable Energy
- Mining
- Rail

PADOM's high vibration resistance and high tensile strength makes it the best choice for heavy equipment such as solar panels, electric vehicles and agricultural machinery.

Its high-retained clamp ensures a powerful and secure attachment and it's unmatched strength ensures a tight joint, so fewer fasteners are needed compared to standard bolts and welding procedures. Its resilience enables a long-lasting solution, even within the toughest environments.

Application Automotive



Ordering Information

Follow the form below to construct a part number for ordering PATA PADOM blind fasteners. Refer to the Grip Data chart for numbers.




PADOM - (DIAMETER) - (NUMBER)

Example: PADOM-080-4 is a, 8.0mm (5/16") Diameter, No. 4

Diameter (D)		Code
mm	inch	
8.0	5/16"	080
9.6	3/8"	096
12.7	1/2"	127

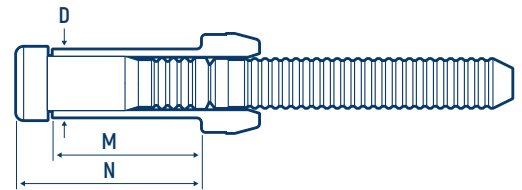
Diameter (D)		Code
mm	inch	
16.0	5/8"	160
19.0	3/4"	190

Data and Dimensions

Diameter (D)		Product Number	Shear 		Tensile 		Clamp Preload 	
mm	inch		N	lbs	N	lbs	N	lbs
8.0	5/16"	PADOM-080	35808	8050	23131	5200		
9.6	3/8"	PADOM-096	49375	11100	32250	7250	18000	4046
12.7	1/2"	PADOM-127	89632	20150	57827	13000	22800	5125
16.0	5/8"	PADOM-160	126774	28500	91189	20500	50000	11240
19.0	3/4"	PADOM-190	200615	45100	129443	29100		

Technical Specifications

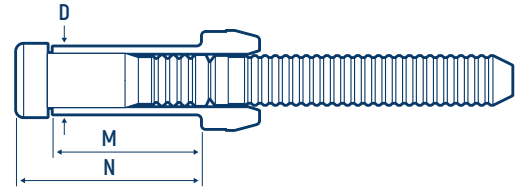
PADOM 080/096








Diameter (D)	Product Number	M	N (MAX)	Grip Range	M	N (MAX)	Grip Range
		mm	mm	mm	inch	inch	inch
8.0mm (5/16") Ø8.8~9.3 (0.37) 	PADOM-080-4	17.5	22.2	4.8-7.9	0.68	0.87	0.20-0.31
	PADOM-080-5	19.0	23.8	6.4-9.5	0.74	0.94	0.26-0.37
	PADOM-080-6	20.8	25.4	8.0-11.1	0.81	1.00	0.31-0.43
	PADOM-080-8	24.0	28.6	11.1-14.3	0.94	1.13	0.43-0.55
	PADOM-080-10	27.5	31.8	14.3-17.5	1.08	1.25	0.55-0.69
	PADOM-080-12	30.5	34.9	17.5-20.6	1.20	1.37	0.69-0.81
	PADOM-080-14	33.5	38.1	20.6-23.8	1.31	1.50	0.81-0.94
	PADOM-080-16	36.5	41.3	23.8-27.0	1.43	1.63	0.94-1.06
9.6mm (3/8") Ø10.5~11.0 (0.43) 	PADOM-096-4	19.5	25.0	4.8-7.9	0.76	0.98	0.20-0.31
	PADOM-096-6	22.5	28.0	8.0-11.1	0.88	1.10	0.31-0.43
	PADOM-096-8	26.0	31.0	11.1-14.3	1.02	1.22	0.43-0.55
	PADOM-096-10	29.0	34.3	14.3-17.5	1.14	1.35	0.55-0.69
	PADOM-096-12	32.2	37.5	17.5-20.6	1.26	1.48	0.69-0.81
	PADOM-096-14	35.3	40.5	20.6-23.8	1.38	1.59	0.81-0.94
	PADOM-096-16	38.5	43.8	23.8-27.0	1.51	1.72	0.94-1.06
	PADOM-096-18	41.7	47.0	27.0-30.1	1.64	1.85	1.06-1.18
PADOM-096-20	45.0	50.2	30.1-33.3	1.77	1.98	1.18-1.32	

Technical Specifications

PADOM 127/160/190



Diameter (D)	Product Number	M	N (MAX)	Grip Range 	M	N (MAX)	Grip Range 
		mm	mm	mm	inch	inch	inch
12.7mm (1/2") Ø13.9~14.8 (0.58) 	PADOM-127-4	25.5	32.0	6.4-9.5	1.00	1.26	0.26-0.37
	PADOM-127-6	28.5	35.8	9.5-12.7	1.12	1.41	0.37-0.49
	PADOM-127-8	31.8	38.5	12.7-15.9	1.25	1.52	0.49-0.63
	PADOM-127-10	35.0	41.7	15.9-19.1	1.37	1.64	0.63-0.75
	PADOM-127-12	38.0	44.8	19.1-22.2	1.49	1.76	0.75-0.87
	PADOM-127-14	41.3	48.0	22.2-25.4	1.62	1.89	0.87-1.00
	PADOM-127-16	44.5	51.0	25.4-28.6	1.75	2.01	1.00-1.12
	PADOM-127-18	47.5	54.5	28.6-31.8	1.87	2.15	1.12-1.26
	PADOM-127-20	50.8	57.5	31.8-34.9	2.00	2.26	1.26-1.38
	PADOM-127-22	54.0	60.7	34.9-38.1	2.12	2.39	1.38-1.50
16.0mm (5/8") Ø17.4~18.5 (0.73) 	PADOM-127-24	57.0	64.0	38.1-41.3	2.24	2.52	1.50-1.63
	PADOM-160-4	30.8	39.0	6.4-12.7	1.21	1.54	0.26-0.51
	PADOM-160-8	37.0	45.0	12.7-19.1	1.45	1.77	0.51-0.75
	PADOM-160-12	43.5	51.5	19.1-25.4	1.71	2.03	0.75-1.00
	PADOM-160-16	47.0	58.0	25.4-31.8	1.85	2.28	1.00-1.26
19.0mm (3/4") Ø21.0~22.2 (0.87) 	PADOM-160-20	56.0	64.5	31.8-38.1	2.20	2.54	1.26-1.50
	PADOM-190-4	35.1	44.5	6.4-12.7	1.38	1.75	0.26-0.51
	PADOM-190-8	41.4	50.8	12.7-19.1	1.62	2.00	0.51-0.75
	PADOM-190-12	47.7	57.1	19.1-25.4	1.87	2.25	0.75-1.00
	PADOM-190-16	54.1	63.5	25.4-31.8	2.12	2.50	1.00-1.26
	PADOM-190-20	60.4	73.4	31.8-38.1	2.37	2.89	1.26-1.50
	PADOM-190-24	66.8	79.8	38.1-44.5	2.62	3.14	1.50-1.75

Installation Tooling

Diameter (D)	Installation Tool	Nose Assembly	TYPE
8.0mm (5/16")	GB756	BOM10-756-26	Pneudraulic
	GB2581	BOM10-756-26	Hydraulic
	HT-40 / HT-60	05BM3002028	HYDRO-PNEUMATIC
9.6mm (3/8")	GB2600	BOM12-2600-30 BOM12-2600-60	Hydraulic
	GB2620PT	BOM12-2620PT-31	Hydraulic
	HT-60 / HT-100	05HT00E1000	HYDRO-PNEUMATIC
12.7mm (1/2")	GB2620	BOM16-2620A-41	Hydraulic
	GB2620PT	BOM16-2620PT-41	Hydraulic
	GB2624PTD	BOM16-2624-37	Hydraulic
	GB2628	BOM16-7624A-40	Hydraulic
	GB3585	BOM16-7624A-40	Hydraulic
	HT-100	05HT00E1200	HYDRO-PNEUMATIC
	16.0mm (5/8")	GB2628	BOM20-585-41
GB3585		BOM20-585-41	Hydraulic
19.0mm (3/4")	GB2628	BOM24-585-46	Hydraulic
	GB3585	BOM24-585-46	Hydraulic



Certifications

Quality assurance is our promise to every customer

ISO 9001



ISO 9001



ISO 14001



CE Marking



IATF 16949



PATTA International Limited
16F No.110 San Duo 4th Road
Kaohsiung 80247
Taiwan

Contact Sales

T. 886 7 3362278
F. 886 7 3369577
E. info@patta.com

PATTA Online

www.patta.com