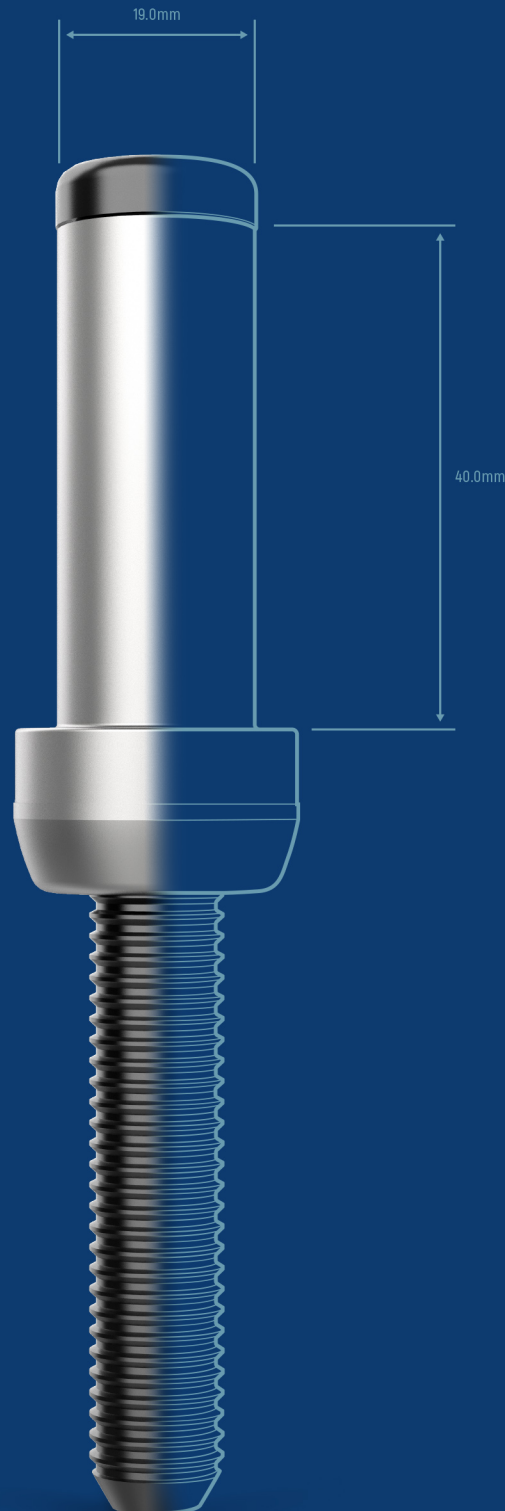


# PATTA<sup>®</sup>

## PADOM

Super High Strength  
Blind Fastener



# PATTA International

## Our Components, Your Key

Since our first blind rivet was manufactured in 1982, followed by self-drilling screws, we at the PATTA Group have continuously improved on technology and the quality of our products, invested massive resources in product development, moving toward becoming a diversified company of manufacturing service provider. We not only focus on R&D, but also pursue high standard and consistent production process and services. At the same time, we listen to our partners' needs around the world.

PATTA is qualified with TS 16949, ISO 9001, and ISO 14001.

Today, PATTA has become an international brand.

With exceptional service and technology, we provide comprehensive fasteners and a wide range of hardware solutions.

### Persistence & Consistency

PATTA provide One-Stop Services from design, production, to logistics. We play as a trusted partner in the hardware industry in the long run. We remain committed to **High Standard Quality, Seamless Services, Fast-moving Supply & Logistics**



North America

Europe

South America





**40** years  
Industry experience

**120**  
Countries

**6**  
Plants

**600**  
Employees



Middle East

 **Taiwan**

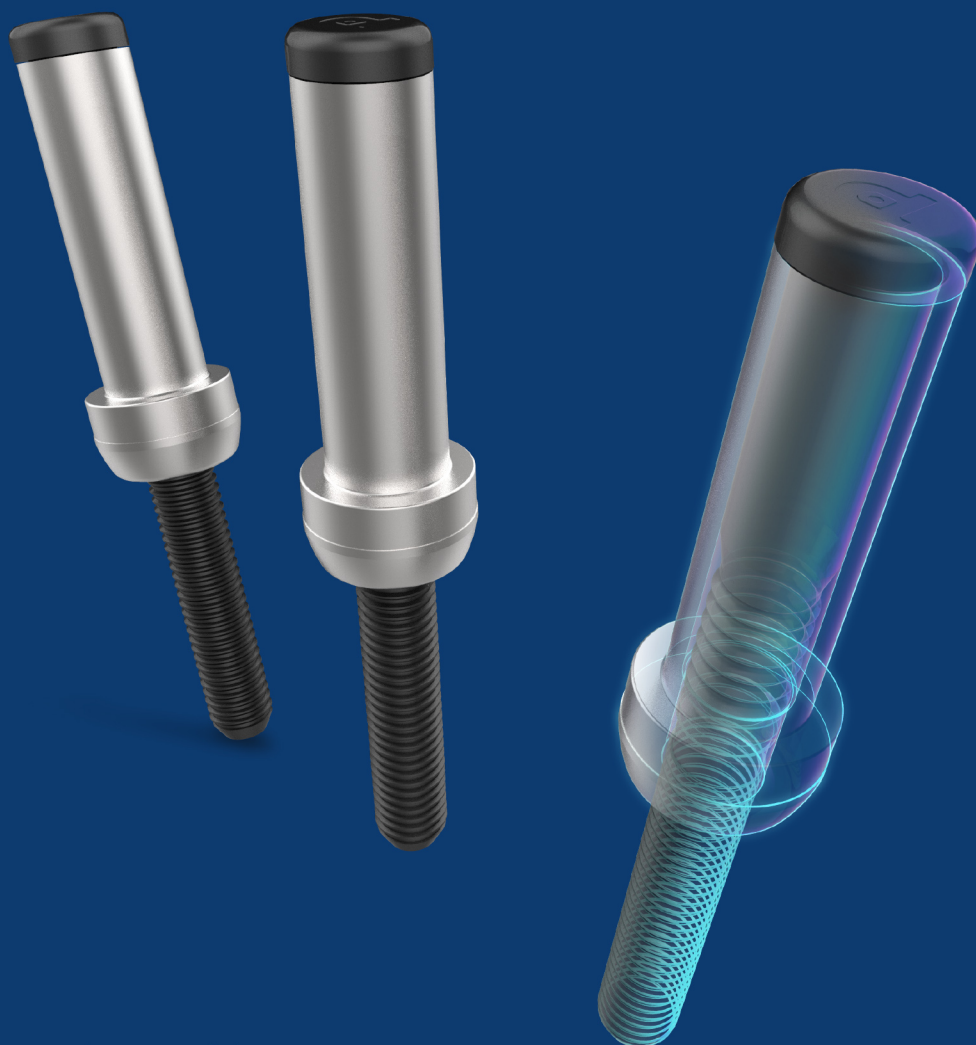
Africa

Asean

Australia

# Index

Introduction	05
Applications	08
Ordering Information	10
Technical Specifications	11
Installation Tooling	13





# PADOM

## Super High Strength Blind Fasteners

Vibration and tamper resistant in any environment.  
Highest shear and tensile strength in the world.

PADOM is a one-piece super high strength blind rivet that can be applied across a wide variety of heavy duty, structural applications. It can be installed within seconds and requires no special training. Installation for standard bolts and fasteners take about five to ten times longer. Furthermore, there is absolutely no need for periodic re-tightening.

PADOM fastening system is tough enough for military vehicles and equipment, auto suspensions, amusement park rides, rail car assembly, and shaft steel storage and retrieval racks. Even the most demanding high-tensile application is no match for the strength of the PADOM fastening system.



# PADOM Fastening System

PADOM's unique mechanical lock guarantees not only sufficient tensile and shear strength, but is also highly resistant to tamper and vibration, which prevents the loosening of stems and prolongs the lifetime of your construction.

Its high clamp and joint tightness surpasses the work of multiple conventional fasteners, which proves it to be cost efficient.

Altogether PADOM is the best choice for fastening in screening plants and jaw crushers for mining, parabolic troughs and torque tube assembly in solar panels, chaser bins and tractor chassis for agricultural uses, and so many more industries.

## Benefits

Extends Structure Life  
Prevents Loosening of Joints  
Saves Costs and Time

## Applicable Industries

Renewable Energy  
Agriculture  
Mining  
Construction  
Commercial Transport  
Military Vehicles

## Body

### Low Carbon Steel

Zinc Plated Finish

## Mandrel

### Medium Carbon Steel

Black Antirust Oil Finish



Installation Time

**01sec**



Shear Strength

**45100lbs**

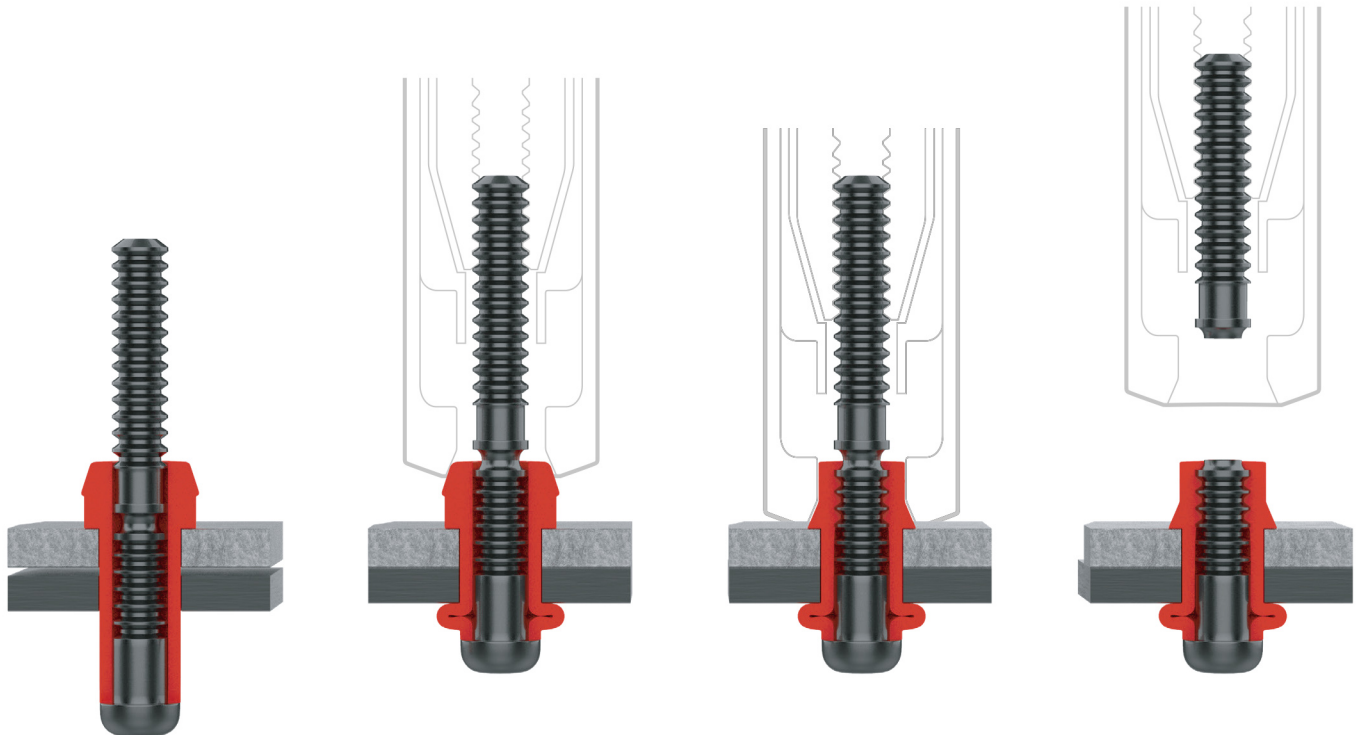


Tensile Strength

**29100lbs**

# PADOM Installation

Installing PADOM fasteners is easy, you can learn the installation procedure in just 1 second, eliminating the need to hire certified welders or specially trained employees. In other words, the correct installation doesn't depend on operator skill and installations are more accurate than other fasteners. When you start using PADOM fasteners, saving you more money in the long run.



1. Insert the fastener into the hole and slip the installation tool over the pintail.

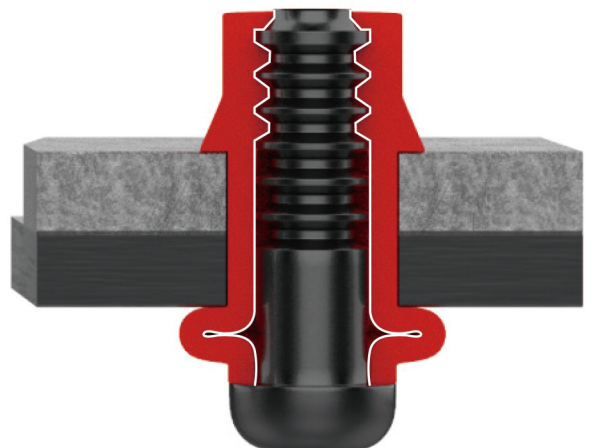
2. Press the trigger to initiate pulling action, until the maximum allowable bulb is formed on the backside.

3. Continued pulling on the pintail draws the workpieces together and moves down the length of the collar, securely locking the collar to the pin.

4. The tool ejects the fastener and releases the puller to complete the sequence.

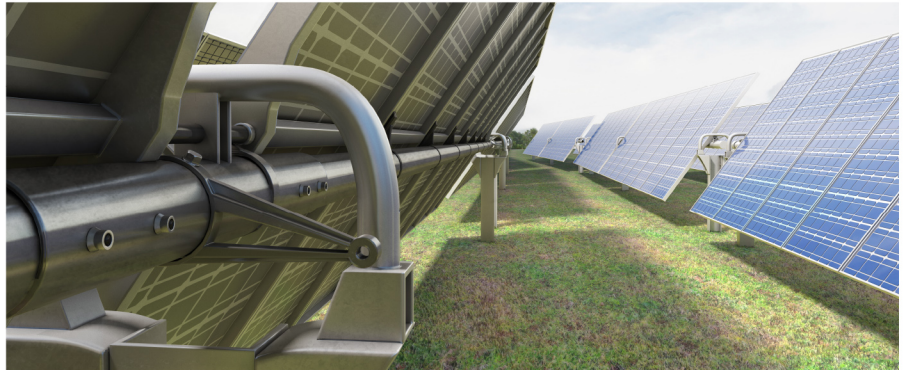
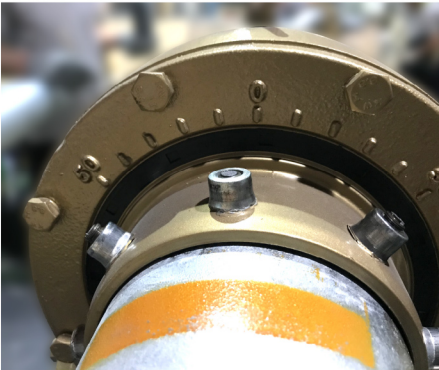
## Setting Grip

The collar is locked to the pin through the forming process, creating a high vibration-resistant connection and the highest strength of any blind fastener.





# PADOM Application



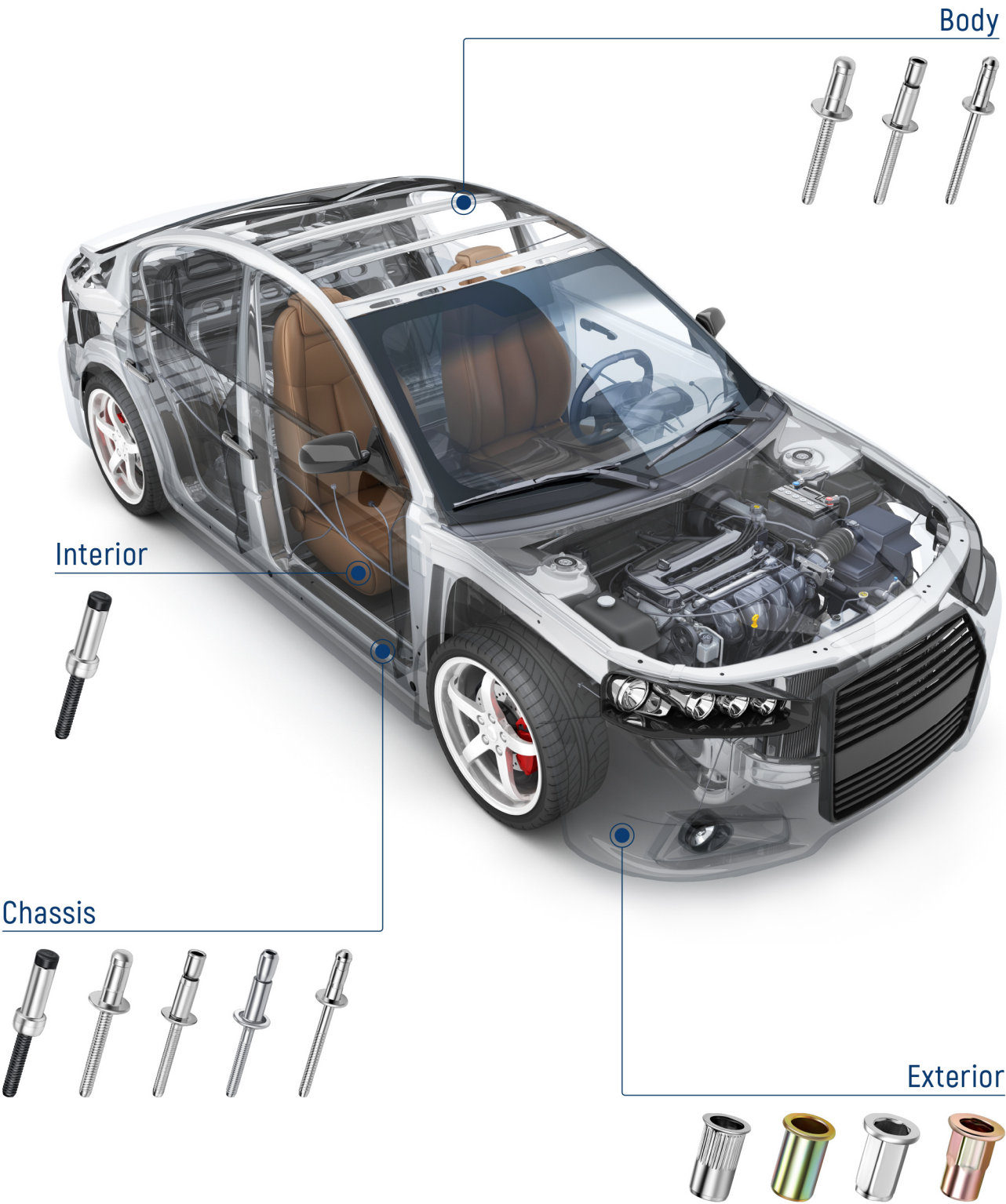
## Applications

Agriculture Machinery  
Cellular Network Towers  
Electric Vehicles  
Renewable Energy  
Mining  
Rail

PADOM's high vibration resistance and high tensile strength makes it the best choice for heavy equipment such as solar panels, electric vehicles and agricultural machinery.

Its high-retained clamp ensures a powerful and secure attachment and it's unmatched strength ensures a tight joint, so fewer fasteners are needed compared to standard bolts and welding procedures. Its resilience enables a long-lasting solution, even within the toughest environments.

# Application Automotive





# Ordering Information

Follow the form below to construct a part number for ordering PATA PADOM blind fasteners. Refer to the Grip Data chart for numbers.


**PADOM - (DIAMETER) - (NUMBER)**

**Example:** PADOM-080-4 is a, 8.0mm (5/16") Diameter, No. 4

Diameter (D)		Code
mm	inch	
8.0	5/16"	080
9.6	3/8"	096
12.7	1/2"	127

Diameter (D)		Code
mm	inch	
16.0	5/8"	160
19.0	3/4"	190

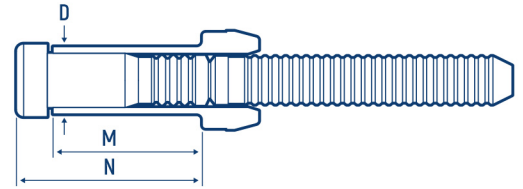
## Data and Dimensions

Diameter (D)		Product Number	Shear 		Tensile 		Clamp Preload 	
mm	inch		N	lbs	N	lbs	N	lbs
8.0	5/16"	PADOM-080	35808	8050	23131	5200		
9.6	3/8"	PADOM-096	49375	11100	32250	7250	18000	4046
12.7	1/2"	PADOM-127	89632	20150	57827	13000	22800	5125
16.0	5/8"	PADOM-160	126774	28500	91189	20500	50000	11240
19.0	3/4"	PADOM-190	200615	45100	129443	29100		



# Technical Specifications

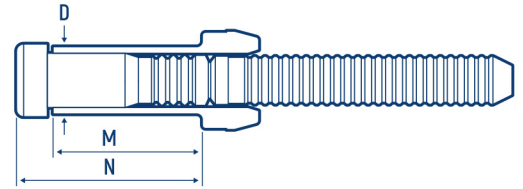
## PADOM 080/096








Diameter (D)	Product Number	M	N (MAX)	Grip Range	M	N (MAX)	Grip Range
		mm	mm	mm	inch	inch	inch
<b>8.0mm</b> <b>(5/16")</b> Ø8.8~9.3 (0.37) 	PADOM-080-4	17.5	22.2	4.8-7.9	0.68	0.87	0.20-0.31
	PADOM-080-5	19.0	23.8	6.4-9.5	0.74	0.94	0.26-0.37
	PADOM-080-6	20.8	25.4	8.0-11.1	0.81	1.00	0.31-0.43
	PADOM-080-8	24.0	28.6	11.1-14.3	0.94	1.13	0.43-0.55
	PADOM-080-10	27.5	31.8	14.3-17.5	1.08	1.25	0.55-0.69
	PADOM-080-12	30.5	34.9	17.5-20.6	1.20	1.37	0.69-0.81
	PADOM-080-14	33.5	38.1	20.6-23.8	1.31	1.50	0.81-0.94
	PADOM-080-16	36.5	41.3	23.8-27.0	1.43	1.63	0.94-1.06
<b>9.6mm</b> <b>(3/8")</b> Ø10.5~11.0 (0.43) 	PADOM-096-4	19.5	25.0	4.8-7.9	0.76	0.98	0.20-0.31
	PADOM-096-6	22.5	28.0	8.0-11.1	0.88	1.10	0.31-0.43
	PADOM-096-8	26.0	31.0	11.1-14.3	1.02	1.22	0.43-0.55
	PADOM-096-10	29.0	34.3	14.3-17.5	1.14	1.35	0.55-0.69
	PADOM-096-12	32.2	37.5	17.5-20.6	1.26	1.48	0.69-0.81
	PADOM-096-14	35.3	40.5	20.6-23.8	1.38	1.59	0.81-0.94
	PADOM-096-16	38.5	43.8	23.8-27.0	1.51	1.72	0.94-1.06
	PADOM-096-18	41.7	47.0	27.0-30.1	1.64	1.85	1.06-1.18
PADOM-096-20	45.0	50.2	30.1-33.3	1.77	1.98	1.18-1.32	

# Technical Specifications

## PADOM 127/160/190



Diameter (D)	Product Number	M	N (MAX)	Grip Range 	M	N (MAX)	Grip Range 
		mm	mm	mm	inch	inch	inch
<b>12.7mm</b> (1/2") Ø13.9~14.8 (0.58) 	PADOM-127-4	25.5	32.0	6.4-9.5	1.00	1.26	0.26-0.37
	PADOM-127-6	28.5	35.8	9.5-12.7	1.12	1.41	0.37-0.49
	PADOM-127-8	31.8	38.5	12.7-15.9	1.25	1.52	0.49-0.63
	PADOM-127-10	35.0	41.7	15.9-19.1	1.37	1.64	0.63-0.75
	PADOM-127-12	38.0	44.8	19.1-22.2	1.49	1.76	0.75-0.87
	PADOM-127-14	41.3	48.0	22.2-25.4	1.62	1.89	0.87-1.00
	PADOM-127-16	44.5	51.0	25.4-28.6	1.75	2.01	1.00-1.12
	PADOM-127-18	47.5	54.5	28.6-31.8	1.87	2.15	1.12-1.26
	PADOM-127-20	50.8	57.5	31.8-34.9	2.00	2.26	1.26-1.38
	PADOM-127-22	54.0	60.7	34.9-38.1	2.12	2.39	1.38-1.50
<b>16.0mm</b> (5/8") Ø17.4~18.5 (0.73) 	PADOM-160-4	30.8	39.0	6.4-12.7	1.21	1.54	0.26-0.51
	PADOM-160-8	37.0	45.0	12.7-19.1	1.45	1.77	0.51-0.75
	PADOM-160-12	43.5	51.5	19.1-25.4	1.71	2.03	0.75-1.00
	PADOM-160-16	47.0	58.0	25.4-31.8	1.85	2.28	1.00-1.26
	PADOM-160-20	56.0	64.5	31.8-38.1	2.20	2.54	1.26-1.50
<b>19.0mm</b> (3/4") Ø21.0~22.2 (0.87) 	PADOM-190-4	35.1	44.5	6.4-12.7	1.38	1.75	0.26-0.51
	PADOM-190-8	41.4	50.8	12.7-19.1	1.62	2.00	0.51-0.75
	PADOM-190-12	47.7	57.1	19.1-25.4	1.87	2.25	0.75-1.00
	PADOM-190-16	54.1	63.5	25.4-31.8	2.12	2.50	1.00-1.26
	PADOM-190-20	60.4	73.4	31.8-38.1	2.37	2.89	1.26-1.50
	PADOM-190-24	66.8	79.8	38.1-44.5	2.62	3.14	1.50-1.75

# Installation Tooling

Diameter (D)	Installation Tool	Nose Assembly	TYPE
8.0mm (5/16")	GB756	BOM10-756-26	Pneudraulic
	GB2581	BOM10-756-26	Hydraulic
	HT-40 / HT-60	05BM3002028	HYDRO-PNEUMATIC
9.6mm (3/8")	GB2600	BOM12-2600-30 BOM12-2600-60	Hydraulic
	GB2620PT	BOM12-2620PT-31	Hydraulic
	HT-60 / HT-100	05HT00E1000	HYDRO-PNEUMATIC
12.7mm (1/2")	GB2620	BOM16-2620A-41	Hydraulic
	GB2620PT	BOM16-2620PT-41	Hydraulic
	GB2624PTD	BOM16-2624-37	Hydraulic
	GB2628	BOM16-7624A-40	Hydraulic
	GB3585	BOM16-7624A-40	Hydraulic
	HT-100	05HT00E1200	HYDRO-PNEUMATIC
	16.0mm (5/8")	GB2628	BOM20-585-41
GB3585		BOM20-585-41	Hydraulic
12.7mm (3/4")	GB2628	BOM24-585-46	Hydraulic
	GB3585	BOM24-585-46	Hydraulic





# Certifications

Quality assurance is our promise to every customer

ISO 9001



ISO 9001



ISO 14001



CE Marking



IATF 16949



**PATTA International Limited**  
16F No.110 San Duo 4th Road  
Kaohsiung 80247  
Taiwan

**Contact Sales**

T. 886 7 3362278  
F. 886 7 3369577  
E. [info@patta.com](mailto:info@patta.com)

**PATTA Online**

[www.patta.com](http://www.patta.com)